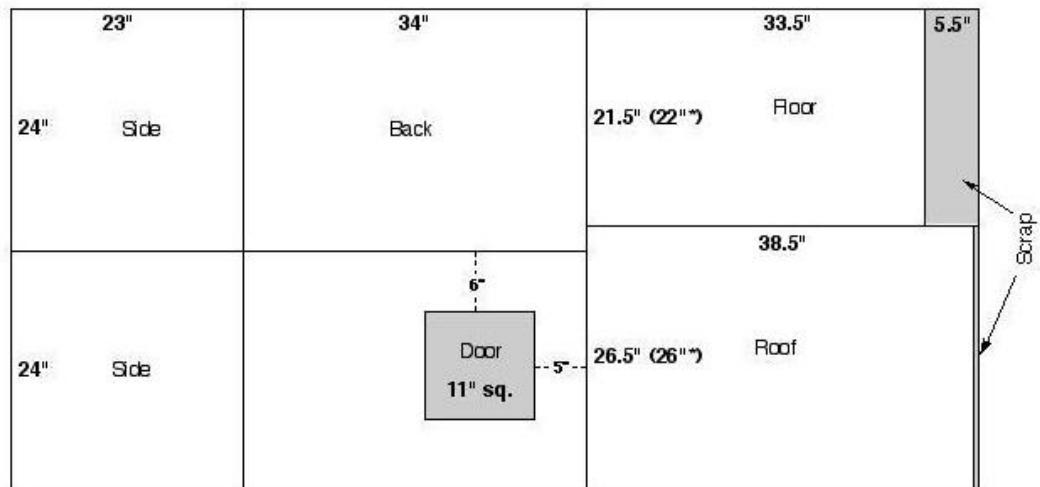


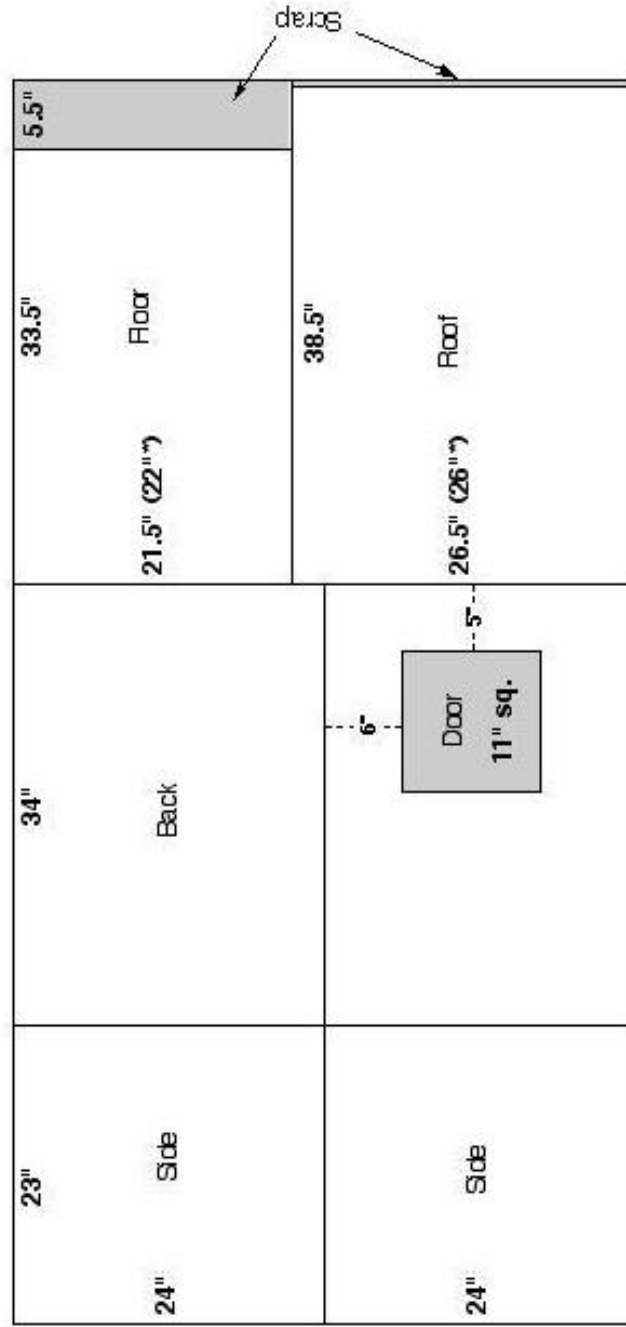
The Legend's DOG HOUSE

from one sheet of plywood with overhanging roof

- One sheet of exterior plywood-1/2 inch
 - 2-2x2s-8'
 - 1-4x4 10'
 - 2 inch exterior screws or galvanized nails
 - Construction adhesive
-
- Cut plywood as shown below.
 - Cut 4-2x2-18"
 - Cut 4-2x2-26"
 - Cut 4-4x4-30"
 - Cut out door from front piece, offset the opening.
 - Screw/nail the 18" to top and bottom of sides, center to center.
 - Screw/nail the 26" 2x2s to top & bottom of front & back, center to center.
 - Screw/nail the 4-4x4 30" to sides of front and back
 - Screw/nail front to sides. (Use construction adhesive prior to attaching).
 - Screw/nail back to sides.
 - Attach roof, which should overhang by 3-3 1/2".
 - Cut corners off bottom 5 1/4 "
 - Attach bottom (which is actually smaller).
 - Optional: If your dogs are on chains, attach 2x2s around door opening.



* If you use these dimensions, make sure doghouse width is no more than 23", preferably a shade less, and make roof rim stick out a fraction of an inch.



* If you use these dimensions, make sure doghouse width is no more than 23", preferably a shade less, and make roof rim stick out a fraction of an inch.